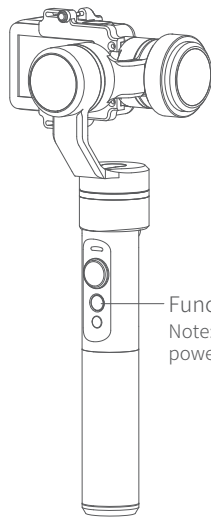
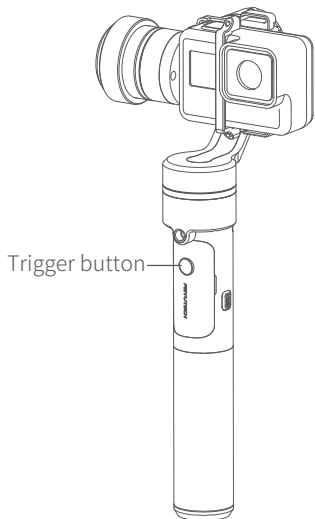




Special Explanation

Please read it carefully before use



Trigger Button

Long press

Double tap

Function

Lock Mode

Panning Reset

Explanation

Enter the lock mode, release it to return to before mode

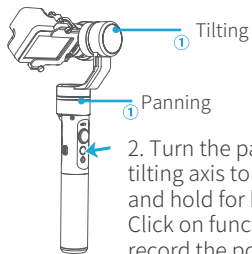
Restore the initial follow state of the panning

Autorotation Mode

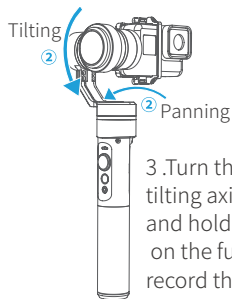
Four times clicks on function button, gimbal will access the autorotation mode setting. Manually turn the gimbal to an initial position, then click again on function button for recording it. Manually turn the gimbal to end position, then click the function button again for recording it. Gimbal will turn to the initial position and begin autorotation.



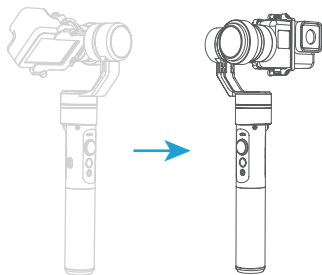
1. Four times clicks on function button, gimbal will access the autorotation mode setting.



2. Turn the panning axis and tilting axis to the position ① and hold for half a second. Click on function button, record the position ①.



3. Turn the panning axis and tilting axis to the position ② and hold for half a second. Click on the function button again, record the position ②.



4. Gimbal will recover to position ① automatically. Tilting axis and panning axis turn to position ② at constant speed. The gimbal is automatically reset after the end.

gimbal autorotation function with camera delay photography function can be used to achieve a very special mobile delay photography. The speed setting is made by Feiyu ON App.

Annexed parameter table:

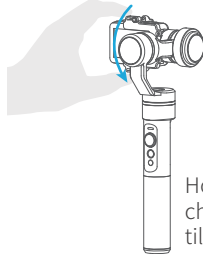
gimbal speed setting reference table

G5 speed setting
8 hours / turn
4 hours / turn
2 hours / turn
1 hours / turn (default)
30 minutes / turn
15 minutes / turn
8 minutes / turn
4 minutes / turn
2 minutes / turn
1 minutes / turn
30 seconds / turn
15 seconds / turn

Manual Lock

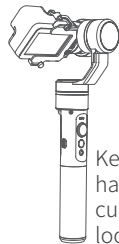
Manual lock , pull to the specified angle to stay half a second can be lock the current angle.(The tilting axis and panning axis in the lock mode can be manual lock and the tilting axis can be manual lock in the panning mode.)Take the tilting axis as an example:

1



Hold the camera and change its angle in tilting axis direction.

2



Keep this position for half second, the current angle will be locked manually.



Guilin Feiyu Technology Incorporated Company
Copyright Reserved