

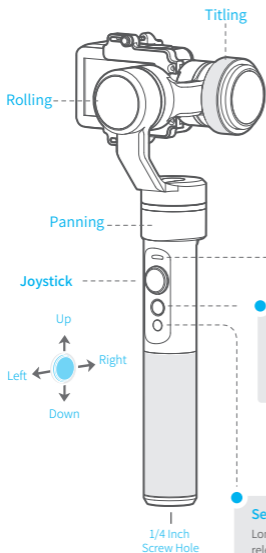


3-Axis Stabilized Handheld Gimbal

Compatible with GoPro HERO5 / HERO4 / HERO3+ / HERO3 /
Yi Cam 4K / AEE etc.

Product Overview

* The showing sports camera is only for reference



Indicator Status

Mode / Status

Blue light flashes once	Panning mode
Blue light flashes twice	Panning and Tilting mode
Blue light flashes three times	Stand-by
Blue light constant on	Lock mode / Initializing
Blue light keeps flashing	Initialization failure / Malfunction
Red light flashes three times	Low battery
Red light keeps flashing	Switching to standby mode / Gimbal will power off

Function Button

You can use the function button to switch the working mode, power on or power off the gimbal. Please refer to chapter "Modes / Functions".

Self-timer button

Long press the selfie button, the lens will rotate 180°, release to restore.

Water Splash Proof



App Control



Compatible with Accessories

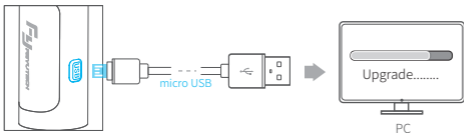


*Never submerge the gimbal in water

Firmware upgrade

- (1) Option 1: connect the gimbal with PC via micro USB cable, and then upgrade the firmware.

Please visit the official website www.feiyu-tech.com to download the relevant programs for upgrading, including USB driver, firmware upgrade software and product firmware, and install the relevant software, decompress the firmware files for standby application.



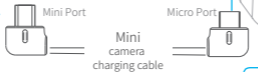
- (2) Option 2: connect the gimbal with Smartphone via bluetooth, and then upgrade the firmware.



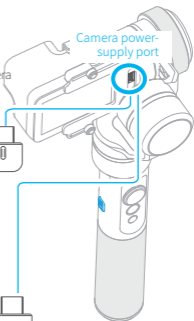
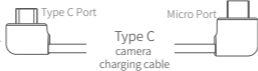
Charging for Camera



By connecting the camera (equipped with Mini-USB charging port) and G5, the camera can be charged while G5 is power on.



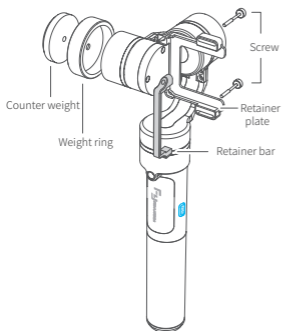
Connect the Hero 5 with the gimbal via Type-C cable, the Hero 5 can be charged when gimbal is power on.



User Guide

Attention !

- (1) Please install the camera before powering on the gimbal
- (2) Please power off the gimbal and remove the smartphone when it is not in use.



1 Charging

Please make sure the battery is fully charged before you use the gimbal for the first time.

Option 1: Charge with micro USB cable.



Option 2: remove the battery and charge the battery with charger (equipped by user).

2 Download APP

Download "Feiyu ON" and install it.

(1) iOS version:



App Store



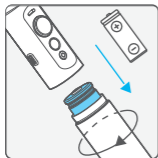
(2) Android version:



Google play

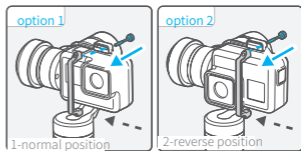
3 Install the battery

Remove the handle and insert one 22650 battery into it.



4 Install the Camera

Take the Gopro HERO 5 camera for example
Install the camera on retainer plate, then fix the camera with retainer bar and screw.



5 Camera balance adjustment

In order to achieve in a better performance of the gimbal, please try to balance the camera before power on G5.

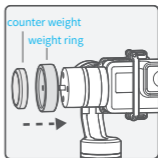
Balance adjustment reference :

GoPro HERO 5 — counter weight & weight ring

GoPro HERO 4 — counter weight



Best Balance




6 Power on / off

Attention: Make sure the camera is secure before powering on the Gimbal.

Power On: Press and hold function button until the green light is on.

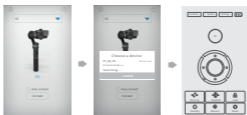
Power Off: Press and hold function button until the red light changes from quick flashing to always on.

 In case of low battery, the indicator will light red and flash 3 times every 5 seconds. Please charge G5 or replace the battery.



7 Connecting App

Start the app on your smartphone, follow the instructions to connect the smartphone with gimbal via Bluetooth.



Modes / Functions

Working Modes

Panning Mode

Tilting and rolling direction are fixed, and the camera lens moves according to the hand movement of the user.

Panning and Tilting Mode

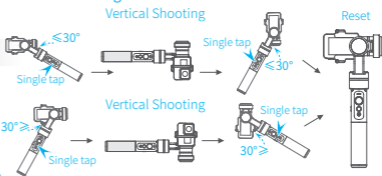
The rolling direction is fixed, and the camera lens moves according to the hand movement of the user.

Lock Mode

The orientation of the camera is fixed.

* The gimbal will work in panning mode after powering on.

Vertical Shooting Mode



Other Functions

Reset

Reset to initial status.

Stand-by

Motor stops working.

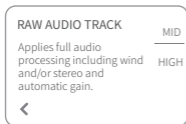
Mode / Function Operation Instructions

Function Button	Mode / Function	Explanation
Single tap	Panning Mode / Lock Mode	Single tap to switch between panning mode and lock mode
Double tap	Panning and Tilting Mode	Under panning and tilting mode, single tap to switch to lock mode
Triple tap	Rotate 180° in horizontal	Make the lens rotate 180 °
Quadruple tap	Reset	Reset the tilting axis of the gimbal to initial orientation and initial mode
Long press until the red light flashes quickly	Stand-by	Under stand-by mode, you can wake up G5 by single tapping on function button or you can initialize G5 by triple tapping on function button

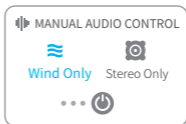
Audio effect optimization

When installing GoPro HERO5 on G5, the following configuration of HERO5 will help you to get better audio effect:

[RAW AUDIO TRACK] HIGH



[MANUAL AUDIO CONTROL] Wind Only

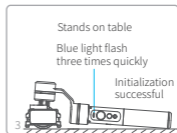
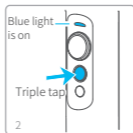
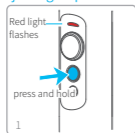


Gimbal initialization

You can initialize your gimbal when:

- (1) when camera is not level
- (2) if not used for a long period of time
- (3) in case of extreme temperature variations

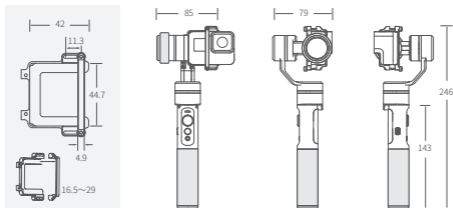
Adjusting steps:



Parameters

Titling Angle	360°	Titling Increments	min 2°/s max 75°/s
Rolling Angle	245°	Panning Increments	min 3°/s max 150°/s
Panning Angle	360°	Usage Time	8 Hours
Adaption	GoPro HERO5 / HERO4 / HERO3+ / HERO3 / Yi cam 4K / AEE		and other cameras with the same size
Weight	271g (Not including battery, camera or counter weight)		

Unit: mm



DISCLAIMER

Prohibit any user for any illegal purpose. Users will be responsible for all behaviors of purchase and use products.

The Company assumes no liability for any risks related to or resulting from the debug and use of this product (including the direct, indirect or third-party losses).

For any unknown sources of using, we will not be at any services.

The updating and changes of product firmware and program may cause changes in function descriptions in this user manual, please read the instructions carefully before upgrading the firmware and use the corresponding user manual.

You can get the latest user manual from the official website: www.feiyu-tech.com

Feiyu Tech reserves the right to amend this manual and the terms and conditions of use the product at any time.

Attention

- Please correctly assemble the gimbal in accordance with the diagram
- Please install the camera before powering on the gimbal
- When the gimbal is not in use or placed on the table, please ensure it is powered off



Create More Possibilities

For more information, please visit our official website: www.feiyu-tech.com
Support Email: service@feiyu-tech.com

Due to software and hardware improvements, your actual product might differ from the descriptions and pictures in this user manual. You can get the latest user manual from the official website.



www.feiyu-tech.com



Scan to download
latest user manual